



PILLAR

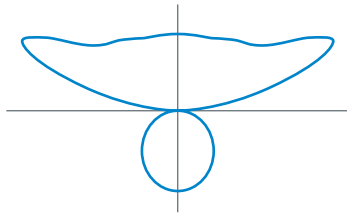
MARK ARCHITECTURAL LIGHTING

INTRODUCING PILLAR

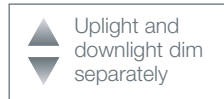


With unsurpassed driver and controls options, Pillar delivers outstanding illumination and visual comfort ideal for commercial offices and classrooms.

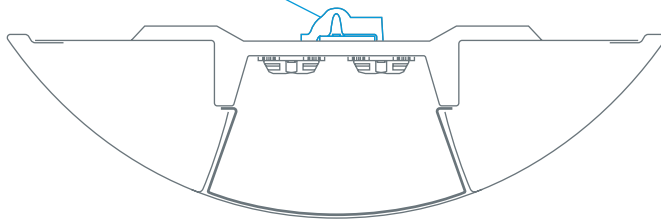
PERFORMANCE



High-performance batwing distribution for even illumination

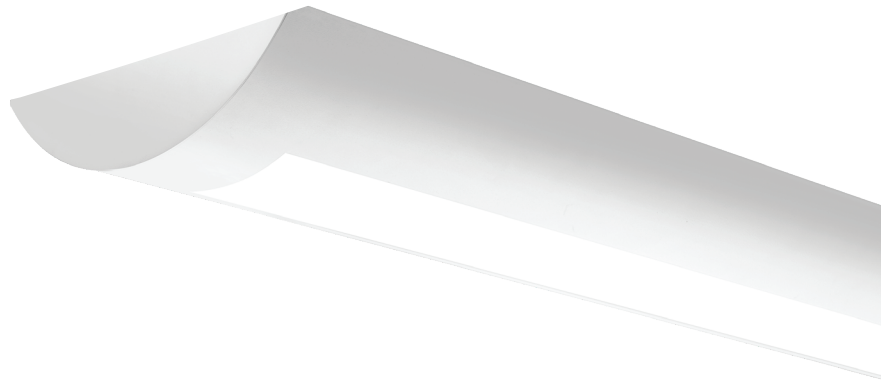


Precision optics designed to maximize distribution



DIMMING CONTROLS

The 0-10V eldoLED® driver delivers smooth, flicker-free dimming to dark. The dual dimming option allows for separate dimming of uplight and downlight.





Mainstream Dynamic Tunable White

Mainstream Dynamic brings exciting features once reserved for niche applications into everyday lighting systems. The Tunable White feature allows designers to include white light into their scenes—matching the optimal light for different activities or to complement colors or materials within a visual environment.



nLight®

Networked lighting controls reduces energy costs, aids in building code compliance, occupant comfort and much more.

nLight® is a lighting controls solution that is easy to specify, install, and use that grows with the pace of your business today and tomorrow.



nLight® Wired

Using only standard CAT-5e cables, an occupancy sensor, wall stations and digital LED luminaires, the nLight networked digital lighting system provides unmatched flexibility.

MARK ARCHITECTURAL
LIGHTING

To learn more about PILLAR, visit www.MarkLighting.com

Join the conversation - follow us on social media.



The product images shown are for illustration purposes only and may not be an exact representation of the product.